



Parent update

17th January 2025

Contents

DIARY DATES _____	2
WINTER PHOTOS _____	3
YEAR 1 TRIP – TAMWORTH CASTLE _____	4
YEAR 2 SCULPTURE WORK _____	5
PARENT UPDATE MEETING – THURSDAY 23 RD JANUARY _____	6
MUSICAL STORYLAND _____	7
BBC WONDERBLOCKS – NEW SHOW ON THE BBC _____	7
JACK AND THE BEANSTALK PANTOMIME – SOLD OUT _____	8
ITEMS FROM PREVIOUS UPDATES: _____	9
NURSERY APPLICATIONS ARE NOW OPEN FOR SEPTEMBER 2025 _____	9
TERM DATES AND STAFF TRAINING DAYS FOR THE YEAR _____	9
EASY FUNDRAISING: RAISE MONEY FOR COLEBOURNE WHILE YOU SHOP: _____	9
EXTREME WEATHER RESPONSE _____	9
CHINESE NEW YEAR MEAL _____	9
HOME LEARNING LINKS _____	11
CORE USEFUL LINKS FOR PARENTS _____	12
USEFUL LINKS FOR PARENTS _____	13
PE KIT DAYS _____	14

At Colebourne we C.A.R.E

At Colebourne, we work together to be...

	C ompassionate	<i>We care for and help ourselves and others. We accept people for who they are.</i>
	A mbitious	<i>We do the best we can and work hard to reach our goals.</i>
	R espectful	<i>We are polite and considerate to others. We respect differences and welcome everyone. We follow rules.</i>
	E ngaged	<i>We concentrate, and contribute to learning and school life.</i>

...because at Colebourne, we C.A.R.E.

DIARY DATES

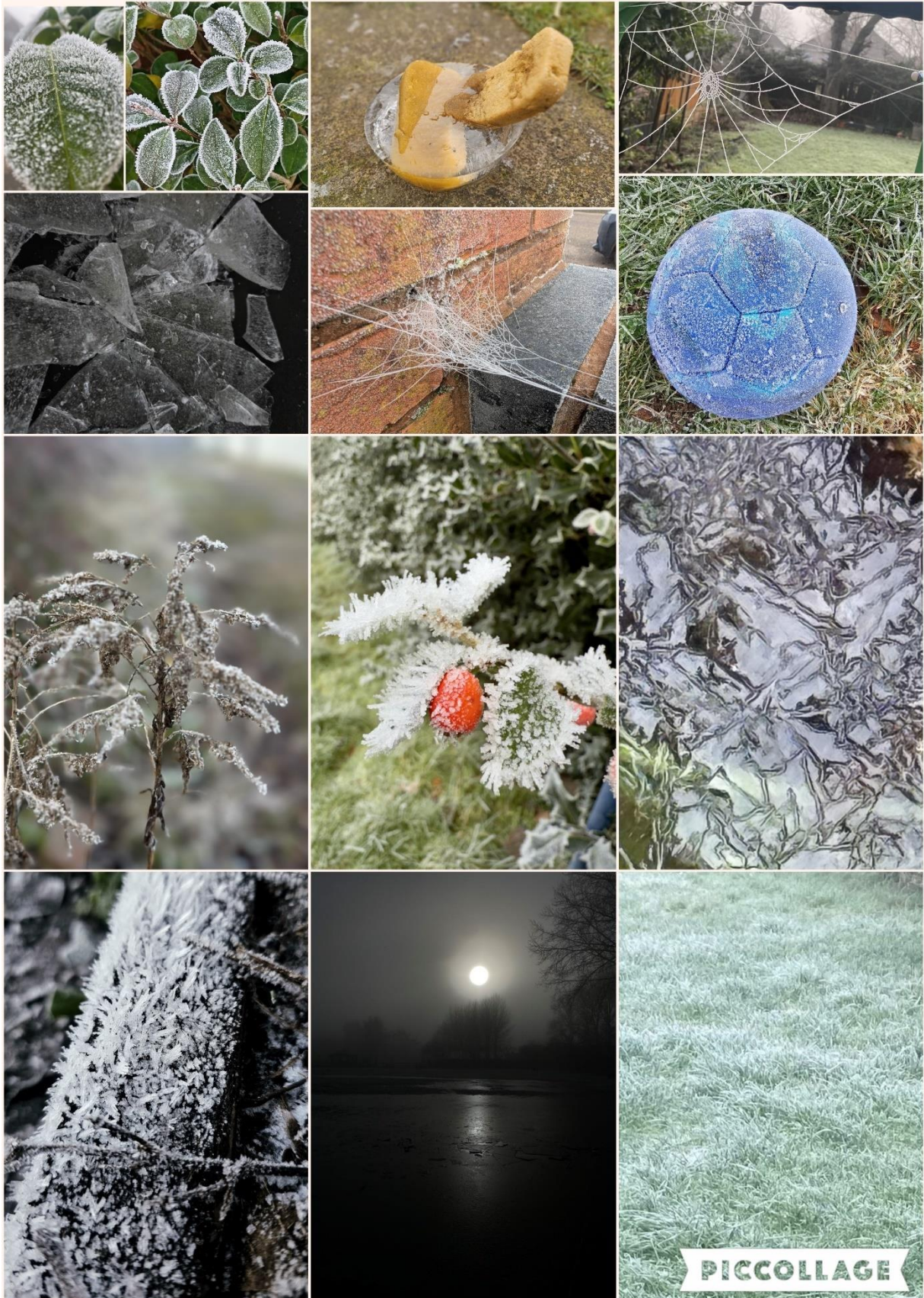
Autumn 2nd Half Term 2024

Tuesday 21 st January	Year 2 Trip to Selly Manor
Wednesday 22 nd January 9.30am (Virtual Meeting)	Year 6 SATs meeting for parents (virtual) The meeting link will be shared via class dojo nearer the time.
Thursday 23 rd January, 9am	Parent update meeting with Mr. Guest and SLT – all parents welcome. <i>Come for a coffee and chat and hear all about what is happening at Colebourne. Lots of opportunities for questions and feedback.</i>
Thursday 23 rd January	M&M Production Jack and the Beanstalk Pantomime 6.30pm – Main School Hall (Doors open from 6pm) SOLD OUT 
Wednesday 29 th January	Chinese New Year meal
Monday 3 rd February	Children's Mental Health Week
Tuesday 4 th February	4M Trip to Buddhist Centre
Wednesday 5 th February	4K Trip to Buddhist Centre
Monday 10 th February, 9am	Celebration Assembly – Year 4-6 All Parents Welcome
Tuesday 11 th February	Year 6 Trip to the Galleries of Justice
Tuesday 12 th February and Wednesday 13 th February	Parents' Evening <i>(bookings open nearer the time)</i>
Thursday 13 th February, 9am	Celebration Assembly – Year 1-3 All Parents Welcome
Friday 14 th February	Last day of the half term.
17th -21st February	Half term
Monday 24 th February	Children return to school for Spring 2nd Half term
Friday 11 th April	Last day of the half term

Winter Photos

Last weekend, Mr. Guest set you a winter photography challenge. Thank you for all the photos emailed in – so many super ones!

Here are just a few of the super contributions from children (and staff).



Year 1 Trip – Tamworth Castle

Year 1 had such a lovely day at Tamworth Castle this week.

They took part in a workshop in the Great Hall and learnt about the job of a Squire (which was to help the Knights put on their armour). They explored lots of different pieces of armour and helped to dress a Knight. Some children wore a Knight's helmet. After, they looked at some of the weapons used such as daggers, bows, arrows and swords - we even got to touch a sword (it was not sharp thankfully!)

In their other workshop, the children met the 'Lady in the Dining Room'. We had to help the Lady lay the table. We also had to bow/ curtsy to her and say "yes my lady".

Finally, the children went on a tour of the castle and found the dungeons!





Year 2 Sculpture work

Last week, year 2 reached the end of their Art unit which focused on the artist Andy Goldsworthy. The children have created their final pieces by creating a sculpture in the style of this artist. They have really impressed the teacher with how much they have learnt about Andy Goldsworthy, the types of artworks he creates and the resources that he uses. Their sculptures look amazing. Well done everybody.



Parent Update Meeting – Thursday 23rd January

Join Mr. Guest and members of the senior leadership team for our termly meeting. Come and enjoy a drink and chat and hear from the team about what is happening at Colebourne.

Your contributions, questions and views are always appreciated.

All parents welcome.

PARENT UPDATE MEETING

**Thursday 23rd January 2025,
From 8.30am for tea and biscuits**

9.00am start

In the main school hall

Parents are invited to attend our next Parent update meeting

(Remote attendance link will be available via Class Dojo on the morning)

Tea / Coffee and biscuits provided

School Updates will include:

OFSTED | Staffing updates | Parent Questionnaire

School improvement | Attendance

Spring Events | Clubs | Trips

and more

Plus time for parent questions and feedback



Musical Storyland

Great music and story telling programme from Cbeebies

Journey through Musical Storyland, where children's favourite fairy tales and traditional folk tales are re-imagined with magical music performed by musicians of the BBC Philharmonic.

This is a fabulous set of programmes which encourages story telling, vocabulary development and learning about instruments.

LINK: [Musical Storyland - BBC iPlayer](#)



BBC WonderBlocks – New show on the BBC

BBC have announced a new educational series; Wonderblocks is the new innovative show that is designed to ignite essential thinking skills in young viewers, training their brains through adventure and problem-solving fun.

Wonderblocks will launch on the Cbeebies channel and BBC iPlayer from Monday 20 January.



The new animated series blends storytelling with foundational concepts to make complex, educational ideas accessible for young minds. Children will meet new Blocks characters, excitable Go and methodical Stop who showcase the balance of action and thought. Their humorous and energetic adventures emphasise core skills like problem-solving, planning, pattern recognition, sequencing, and logic while also modelling the values of teamwork, friendship, curiosity and a love of learning.

Jack and the Beanstalk Pantomime – SOLD OUT

SOLD OUT

On the evening there will be refreshments available before the show (drinks, snacks, samosa). Plus light-up items.

In the interval we will also be selling ice cream.

m&m
theatrical productions

Jack and the Beanstalk

Thursday 23rd January 2025
6pm – 8pm
(show starts at 6.30pm)
Main school hall

This magical 70-minute performance will thrill, enchant and excite children and adults of all ages.

Show starts at 6.30pm in the school hall (doors open from 6.00pm)

There will be an interval where drinks and snacks will be on sale. Flashing toys will also be on sale before the show and during the interval.

Tickets are limited and are available on a first come first serve basis.

Children must be accompanied by a responsible adult.

Tickets Only £6 each
(children under 3 free)

Tickets on sale now!
Pay via the Arbor Shop

Please note—The school will take no responsibility for children at this event. Payments are non-refundable.

Items from previous updates:

Nursery applications are now open for September 2025

Applications for **Nursery for September 2025** are now open for children born between: **1st September 2021 and 31st August 2022.**

Applications are NOT a first come first served; any applications received by the deadline for applications will be considered using the published admissions criteria.

Visit the school admissions webpage for more details and to book onto an information meeting:

<https://www.colebourne.bham.sch.uk/admissions/#nursery-information-and-admissions>

Term dates and staff training days for the year

The updated term dates and the staff training days are on the school website: <https://www.colebourne.bham.sch.uk/diary-and-term-dates/>

Remaining Staff Training Days:

- *STAFF TRAINING DAY 5: Monday 21st July 2025*

Easy fundraising: Raise money for Colebourne while you shop:

<https://www.easyfundraising.org.uk/causes/colebourneprimary>

Extreme Weather Response

At Colebourne we have an extreme weather policy which supports us in ensuring the safety of pupils, staff and families.

You can see the full policy via the **policies link** on the new school website parents section: <https://www.colebourne.bham.sch.uk/parents/>

Chinese New Year Meal




On Wednesday 29th January, we will be celebrating Chinese New Year in school. Children who are school dinners will have a special Chinese New Year menu. If your child usually has a packed lunch and they would like to

have a school dinner for Chinese new year, please contact the office by the end of the week before.





Home Learning Links

Here are our core links for any home learning you would like to do.

	<p>Home learning grids</p> <p>These are for each half term for each year group and enable additional learning around the work the children do in class:</p> <p>Home learning grids</p>
	<p>BBC Bitesize</p> <p>http://www.bbc.co.uk/bitesize/primary/</p>
	<p>Oak National Academy</p> <p>Oak National Academy</p>

We also have some of our subscription services such as

	<p>Doodle</p> <p>A great platform to learn and practise key skills for maths and English</p> <p>https://www.doodlemaths.com/</p>
	<p>Times Tables Rockstars</p> <p>Practice your times tables and quick maths recall skills</p> <p>https://play.ttrockstars.com/auth/school/student</p>

Core useful links for parents

Year group expectation sheets:

[Key expectation sheets](#)

Email address for parents:

parents@colebourne.bham.sch.uk

Term Dates:

<https://www.colebourne.bham.sch.uk/diary-and-term-dates/>

Easy fundraising: Raise money for Colebourne while you shop:

<https://www.easyfundraising.org.uk/causes/colebourneprimary>

Free school meals checker:

<https://www.cloudforedu.org.uk/oefe/birmingham/provider>

School information for parents:

<https://www.colebourne.bham.sch.uk/parents/>

School policies:

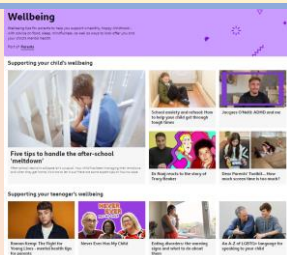
[School policies](#)

Useful Links for Parents

**Better
Health** Start
for Life

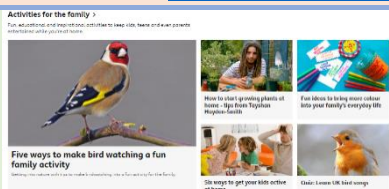
The place for trusted NHS advice and guidance to help you have a healthy and happy baby during pregnancy, birth and parenthood.

<https://www.nhs.uk/start-for-life/early-learning-development/>



BBC Wellbeing site – video and help for parents own mental health and that of their children

<https://www.bbc.co.uk/bitesize/groups/cw9v6l8d0q6t>



BBC bitesize parents
Tips, advice and activity ideas for being a parent

<https://www.bbc.co.uk/bitesize/parents>



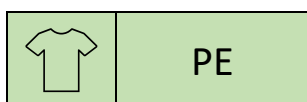
Birmingham School Health Support Service
Lots of health related links and support for children and families including the school nurse
Community paediatric and child development centres
Forward thinking Birmingham
And much more

[Birmingham School Health Support Service](#) | [Home education](#) | [Birmingham City Council](#)

PE KIT Days

Spring 1st Half Term

**Children should come to school in PE kits
on these days**



	Monday	Tuesday	Wednesday	Thursday	Friday
RN					
RT					
1G					
1H					
2F					
2M					
3B					
3C					
4K					
4M					
5G					
5P					
6A					
6T					