



# Parent update

## 6th December 2024

### Contents

|  |           |
|--|-----------|
| <b>DIARY DATES</b>   | <b>2</b>  |
| <b>STAFF LEAVING</b>   | <b>3</b>  |
| <b>RECEPTION VISIT TO THE CHURCH</b>                                 | <b>3</b>  |
| <b>PREPARING FOR CHRISTMAS WITH AUTISTIC</b>                         | <b>5</b>  |
| <b>CHOCOLATE AND TEDDIES</b>   | <b>5</b>  |
| <b>CHRISTMAS FAIR</b>  | <b>6</b>  |
| <b>COMPASS PARENT WORKSHOP</b>                                       | <b>6</b>  |
| <b>MATHS PARENT WORKSHOP</b>   | <b>7</b>  |
| <b>JACK AND THE BEANSTALK PANTOMIME – BOOK NOW – LIMITED TICKETS</b> | <b>8</b>  |
| <b>TOY SAFETY</b>  | <b>9</b>  |
| <b>COMMUNITY INFORMATION – ROCK-UP – ROCK CLIMBING COURSES</b>       | <b>10</b> |
| <b>ITEMS FROM PREVIOUS UPDATES:</b>                                  | <b>11</b> |
| AUTUMN 2 <sup>ND</sup> HALF TERM DATES AND CHRISTMAS ACTIVITIES      | 12        |
| RECEPTION ADMISSIONS FOR SEPT 2025                                   | 12        |
| CHRISTMAS FAIR   | 14        |
| WINTER HOLIDAY CLUBS   | 15        |
| PUNCTUALITY  | 16        |
| TERM DATES AND STAFF TRAINING DAYS FOR THE YEAR                      | 16        |
| EASY FUNDRAISING: RAISE MONEY FOR COLEBOURNE WHILE YOU SHOP:         | 16        |
| EXTREME WEATHER RESPONSE   | 16        |
| COMPASS – PARENT/CARER ONLINE DROP-IN SESSIONS                       | 17        |
| <b>HOME LEARNING LINKS</b>   | <b>19</b> |
| <b>CORE USEFUL LINKS FOR PARENTS</b>                                 | <b>20</b> |
| <b>USEFUL LINKS FOR PARENTS</b>                                      | <b>21</b> |
| <b>PE KIT DAYS</b>   | <b>22</b> |

At Colebourne we C.A.R.E

## DIARY DATES

| Autumn 2 <sup>nd</sup> Half Term 2024       |  |
|---|--|
| Tuesday 10 <sup>th</sup> December, 8.50am   | <b>Celebration assembly 1-3 in the hall</b>  |
| Wednesday 11 <sup>th</sup> December         | <b>Christmas Fair</b><br><i>3.40pm – 5.15pm</i>  |
| Thursday 12 <sup>th</sup> December, 8.50am  | <b>Celebration assembly 4-6 in the hall</b>  |
| Monday 16 <sup>th</sup> December, 2.15pm    | <b>Reception Christmas Songs and Craft Event</b> <i>Reception children and parents</i>   |
| Tuesday 17 <sup>th</sup> December, 9.15am   | <b>Year 1 – 3</b><br><b>Christmas Songs to parents</b>   |
| Wednesday 18 <sup>th</sup> December, 9.15am | <b>Year 4 – 6</b><br><b>Christmas Songs to parents</b>   |
| Wednesday 18 <sup>th</sup> December         | <b>Christmas Lunch for children</b><br><i>(Sandwich children can book a dinner nearer the time)</i>  |
| Thursday 19 <sup>th</sup> December          | <p style="text-align: center;"><b>Christmas Party Morning</b><br/><i>(including a FREE pizza picnic lunch for all children before they leave at 12.40pm)</i></p> <p style="text-align: center;"><b>Christmas Jumper / non-uniform day</b><br/>We will be collecting money for charity on this day. Money raised will be split between– <b>Crisis</b> - our Christmas Charity – who provide help and support to homeless people in the UK; and <b>Islamic Relief</b> – who support various projects around the world.</p> |
| Thursday 19 <sup>th</sup> December          | <b>Last day of term</b><br><b>All pupils finish at 12.40pm</b><br><i>(Please note there is no afternoon club or after school provision)</i>  |
| Tuesday 7 <sup>th</sup> January             | <b>Children return to school for Spring 1<sup>st</sup> Half term</b>   |
| Thursday 23 <sup>rd</sup> January           | <p style="text-align: center;"><b>M&amp;M Production</b><br/><b>Jack and the Beanstalk Pantomime</b><br/><b>6.30pm – Main School Hall</b><br/><i>Tickets on Sale £6 per person</i></p> <div style="text-align: center;">  </div>   |

## Staff Leaving

As we come to the end of the term we have to say goodbye to a few members of staff.

Leaving us at the end of term will be Mrs Brierley and Mrs Bagl. We wish them all the best for their next adventures and thank them for all their work with the children and families.

## Reception Visit to the Church

Reception had a fantastic time at the church this week, hearing about the first Christmas with Reverend Barrett. They listened carefully to the story and enjoyed dressing up and acting out parts of the story.

They also enjoyed making some fluffy sheep and some peace doves whilst we were there.

The staff received lots of compliments about how well the children listened and joined in with all of the activities. Well done everyone!





**Christmas  
crafts**



## Preparing for Christmas with Autism

The Christmas period can be a very exciting but often stressful time of the year for many autistic people. It can be a time with lots of change, social interaction and expectations. The National Autistic Society have put together a brief list of resources that may prove helpful in making this festive period as special and stress free as possible for autistic people.



<https://autism.org.uk/advice-and-guidance/professional-practice/christmas-resources>

Another very useful document is: A community guide to a Happy Neurodivergent Christmas.

You can download a copy here:

<https://laurahellfeld.co.uk/a-community-guide-to-a-happy-neurodivergent-christmas/>



## Chocolate and Teddies

A huge thank you for all your donations of Chocolates and Teddies. These will form part of the prizes and tombola for the Christmas Fair.

We really appreciate your support and generosity. Further donations are welcome.



## Christmas Fair

We look forward to welcoming you all to our Christmas Fair on Wednesday 11<sup>th</sup> December.

**The fair starts at 3.40pm** and the entrance is **via the vehicle entrance**.  
STRICTLY NO PARKING ON SITE PLEASE.

We have lots of stall holders, food, games, tombola, raffle and of course Santa, in his all new grotto!!

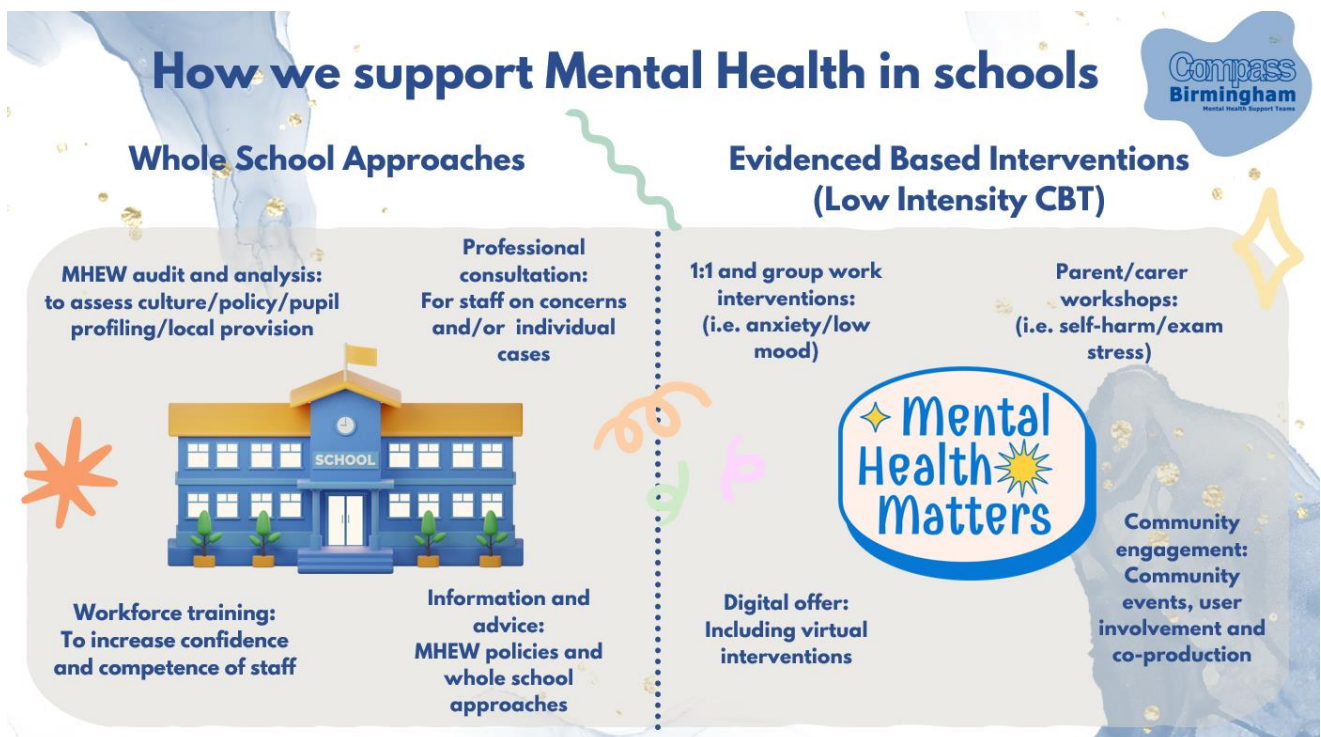
Food on sale will include Samosa, Shish Kebab Wraps, Chips and more.

Our Grand Raffle will also launch at the Fair and tickets will then be on sale until the morning of Wednesday 18<sup>th</sup> December.

## Compass Parent Workshop

Thank you so much for those who have attended the coffee morning and joined on- line. Some really valuable discussions and suggestions around supporting our children so thank you.

A copy of the presentation can be found via the post on Class Dojo for those who were unable to attend on this occasion. We hope to hold another workshop with Compass in the spring/ summer too.



## Maths Parent Workshop

Well we definitely got your brains working! Thank you again for those who stayed with us to do the maths meeting with Miss Perry.

We hope you gained lots of information about how we teach maths at Colebourne and a few tips on how you can help at home too.

Also a thank you to our children from the maths council who joined us to help to show parents exactly how they learn. Great discussions again among parents so thank you for your participation.

The presentation that details the areas we discussed can be found here:

[Parent Workshops](#)

CPA in action!

**Find  $\frac{1}{4}$  of 12.**

**How would you solve this?**

"All you need to do is divide it by the bottom and multiply by the top"

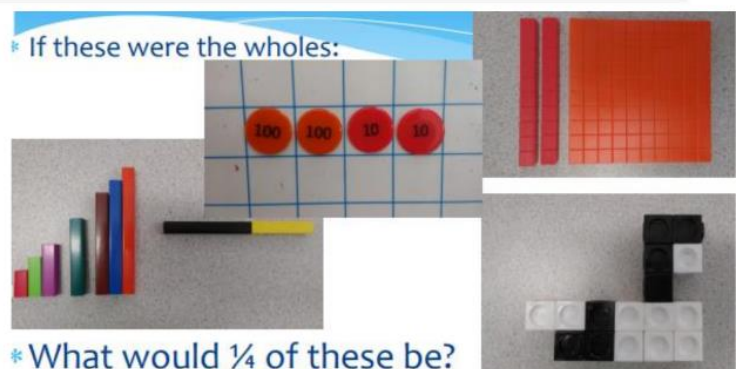
This would be an abstract approach teaching a procedure. The children will get the right answer but won't understand the concepts and maths behind it.

CPA in action!

Mastery approach:

Concrete

- Maths mastery would begin with the concrete- seeing and feeling it.
- The idea that  $\frac{1}{4}$  is one of four equal parts of a whole.
- Questions asked like: can you model  $\frac{1}{4}$  using the apparatus? How many ways can you find to show  $\frac{1}{4}$ ?





# Jack and the Beanstalk

**Thursday 23<sup>rd</sup> January 2025**

**6pm – 8pm**

*(show starts at 6.30pm)*

**Main school hall**

This magical 70-minute performance will thrill, enchant and excite children and adults of all ages.

Show starts at 6.30pm in the school hall  
(doors open from 6.00pm)

There will be an interval where drinks and snacks will be on sale. Flashing toys will also be on sale before the show and during the interval.

Tickets are limited and are available on a first come first serve basis.

Children must be accompanied by a responsible adult.



**Tickets**

**Only**

**£6 each**

*(children under 3 free)*

**Tickets on sale now!**  
**Pay via the Arbor Shop**

Please note—The school will take no responsibility for children at this event. Payments are non-refundable.



# Toy safety

*“I would hate for any other child to go through what Becca suffered because of buying dangerous toys via online marketplaces.”*

Mum of two-year-old Becca who swallowed magnets from a toy

**Toys from reputable brands are made to be safe. But if they've come from an unknown seller on an online marketplace, a market or small discount store, they could be dangerous.**

### Buying safely

- Buy toys from brand names you know. If you've never heard of the seller or the brand and price is really tempting, it could be dangerous
- Watch out for cheap copies of popular toys. They may not be made to UK safety standards.
- Check if the toy has been removed from sale because it's unsafe. Visit [gov.uk](http://gov.uk) and search 'product recalls'
- If you buy something that looks unsafe, trust your instincts and send it back.



### Under 3s most at risk

Babies and toddlers are curious and naturally put everything in their mouths. So dangerous toys can pose the biggest risk to small children. Be especially careful when buying for under 3s.

Watch out for missing or contradictory age warnings. If a toy is pictured with a toddler but marketed as unsuitable for young children, pick something else.

### Which toys are most dangerous?

- Toys with:
  - accessible button batteries that can burn through your child's food pipe
  - super strong magnets that can rip through your child's belly
  - long cords that can strangle your child
  - small parts that can choke your small child
- Water beads that can block your child's bowel if swallowed
- Electrical toys with exposed wires or chargers that can catch fire.

### Checking toys

If you're unsure about the safety of a toy, here are some checks you can do:

- Check battery compartments for accessible button batteries or loose spares in the box
- Check for any loose small magnets
- Give the parts on the toy a quick tug and check for small parts that come off
- Look for long cords or access to stuffing
- Check if there are any age restrictions or safety warnings on the product.

### Report dangerous toys

If you spot or buy a toy you're concerned about:

- Citizens Advice consumer helpline: 0808 223 1133
- Citizens Advice consumer helpline (Welsh-speaking adviser): 0808 223 1144
- Advice Direct Scotland helpline: 0808 164 6000
- Northern Ireland Consumerline: 0300 123 6262

## Community information – Rock-Up – rock climbing courses

We are please to share information with you about a rock climbing course that is happening at Rock Up in Birmingham – See flyer below for details.

We also thank Rock Up for their donation of a £20 voucher for the Christmas Fair Raffle.



**ROCKSTARS**  
NICAS  
COURSES

AGES  
6+

**NICAS ACADEMY**

Achieve a Nationally Accredited Rock Climbing Qualification with Rockstars NICAS Academy

Over 12 weeks our Rockstars will grow in self-confidence, team spirit, & overall well-being. They'll take part in the NICAS Foundation & NICAS Advanced programmes.



[WWW.ROCK-UP.CO.UK/ROCKSTARS](http://WWW.ROCK-UP.CO.UK/ROCKSTARS)  
SIGN UP WHILE SPACES LAST!

Items from previous updates:

# **FIT KIDS ZONE C.I.C HODGE HILL WINTER CAMP**



**TUESDAY 2ND JANUARY  
TILL  
FRIDAY 5TH JANUARY**



**FREE 9 AM TILL 1PM  
CHILDREN MUST RECEIVE  
BENEFIT RELATED FREE  
SCHOOL MEALS AND HAVE  
A HAF CODE**



**FUN & CREATIVE ACTIVITIES**

Colebourne Primary School  
Stechford Road  
Hodge Hill  
B34 6BJ

## **MULTI-SPORTS**

**THIS WINTER CAMP WILL PROVIDE LIFE SKILLS AND  
HELP BUILD CONFIDENCE. CHILDREN WILL BE ABLE  
TO ACCESS A NUTRITIOUS BALANCED MEAL  
THROUGHOUT THE DAY AS WELL AS REFRESHMENTS  
WHICH WILL ALL BE PROVIDED BY FIT KIDS ZONE  
C.I.C**

**All Welcome**

**if you don't receive free school meals you are still welcome to  
attend our club with a small charge per day**

**£10 per day without food £13 per day with food**

**9am till 3pm**

**Www.Fitkidszone.co.uk/clubs**

**07985607421**

## Autumn 2<sup>nd</sup> Half Term Dates and Christmas Activities

We have now published the dates for the second half of the Autumn term – please see the diary dates at the start of this newsletter.

We hope you will be able to join us for some of these events.

**Please note that the Autumn Term for children finishes on**

**Thursday 19<sup>th</sup> December at 12.40pm**

## Reception admissions for Sept 2025

Applications are now open for Reception class entry for September 2025. The closing date is 15<sup>th</sup> January 2025.

If you would like your child to get a place in our reception, you need to make an application directly to the local authority where you live – for most people this will be Birmingham.

**Apply via the local authority website**

**<https://www.birmingham.gov.uk/schooladmissions>**





**Colebourne Primary School**

Stechford Road – Hodge Hill

0121 675 8500 option 1

[www.colebourne.bham.sch.uk](http://www.colebourne.bham.sch.uk)

*"Working together to achieve success for all"*

# **Reception Admissions for September 2025**

**Parent information meetings**  
**(in person or via Teams)**

**Thursday 21<sup>st</sup> November 2024, 9.30am**  
**Thursday 9th January 2025, 9.30am**



Scan here for more information and to book on to one of the meetings.

## **Our School Aim**

***Providing children with a secure, happy and stimulating environment, inspiring them to become confident, life-long learners, and responsible members of society.***



**COLEBOURNE PRIMARY SCHOOL**  
**CHRISTMAS FAIR**

JOIN US FOR CRAFTS, GAMES,  
DELICIOUS TREATS AND SANTA  
**WEDNESDAY 11TH DECEMBER**

**3.40 PM - 5.15 PM**

**ENTER VIA THE VEHICLE ENTRANCE**

**- NO CARS ON SITE PLEASE -**

**INDOOR AND OUTDOOR EVENT**

**SO WRAP UP WARM**



**STALL HOLDER BOOKINGS ARE NOW OPEN -  
PLEASE RING 0121 675 8500 OPT. 1  
FOR DETAILS OR SCAN THE QR CODE  
TO REQUEST A STALL**

Stall holder bookings – click here: [→ BOOK A STALL ←](#)

## Winter Holiday Clubs

If your child is eligible for benefits related free school meals, you should have received an Email this week with the HAF code for your child.

If you have not received this email and you are eligible for benefits related free school meals, please contact the office so we can check we have the correct email details for you on our system.

Parent's of children who are not-eligible for benefits related free school meals can also book onto some of the clubs for a charge. This includes the one taking place at Colebourne – see flyer on the next page for details.

### **Activity Packs**

There are two types of activity packs available, one for primary-aged children and another for secondary-aged children. Each activity pack contains fun arts and crafts projects, games and activities that can be completed throughout the holidays.

Families can apply for a maximum of **one activity pack per eligible child**. You will need to enter the details for each eligible child to request activity packs. There are two types of activity packs available depending on your child's age, secondary or primary.

### **Food Boxes**

Through a partnership with Morrison's you can receive a box of cupboard essentials and fresh produce. The contents of the box will include all the ingredients needed to make 4 meals for a family of 4. All boxes are vegetarian.

**One food box is available for each eligible household (NOT one per child).** Eligible households must have at least one child or young person eligible for benefits-related free school meals living there.

**To find out more information or to book a club go to**  
[www.bringitonbrum.co.uk](http://www.bringitonbrum.co.uk)

**To book activity packs and food boxes – click here:**  
<https://bringitonbrums.coordinate.cloud/>

## Punctuality

A reminder that the school gates close at 8.40am. This includes the top gate.

8.40am is the start time of lessons and all children should be in class at this time.

After this time parents should walk the children via the vehicle entrance. All children must be supervised using this entrance.

## Term dates and staff training days for the year

The updated term dates and the staff training days are on the school website: <https://www.colebourne.bham.sch.uk/diary-and-term-dates/>

### **Remaining Staff Training Days:**

- *STAFF TRAINING DAY 3: Friday 20th December 2024*
- *STAFF TRAINING DAY 4: Monday 6th January 2025*
- *STAFF TRAINING DAY 5: Monday 21st July 2025*

## Easy fundraising: Raise money for Colebourne while you shop:

<https://www.easyfundraising.org.uk/causes/colebourneprimary>

## Extreme Weather Response

At Colebourne we have an extreme weather policy which supports us in ensuring the safety of pupils, staff and families.

You can see the full policy via the **policies link** on the new school website parents section: <https://www.colebourne.bham.sch.uk/parents/>



## Compass – Parent/Carer online drop-in sessions

Compass is leading the way in supporting the mental health and emotional wellbeing of children, young people, and families in selected educational settings across Birmingham.

Birmingham Mental Health Support Teams (MHST) offers free, and confidential support to Children, Young People and Families with mild to moderate emotional health and wellbeing needs.

Whether it is feeling sad, scared, worried, or experiencing challenges like anger or frustration, Compass is here to connect you with the right help.

Compass Birmingham MHST works across selected schools in the North and East of Birmingham, working directly with primary and secondary schools to ensure every child and young person has access to the support they need.

### How Can We Help You

The Compass team of compassionate and friendly Practitioners, are here to support you in building coping skills and strategies for a range of issues, including:

- Low mood and motivation
- Anxiety and irrational fears
- Challenging behaviours like angry outbursts or frustration
- Difficulties in family and peer relationships
- Adjusting to change and transitions.

Compass currently work at Colebourne supporting some of our pupils. They also offer a drop-in service for parents to ask about services or to seek support for their children.

Every Tuesday 11-12:30pm (until 17th December), our Families Practitioner holds an informal online parent/carers drop-in. This is a space for families to find out more about Compass, have any questions answered or have signposting support.

The flyer contains a QR code that parents can scan at the time of the session or they can follow the link here:

<https://bit.ly/484SR9g>

# Parent & Carer Drop-In Sessions



**A safe confidential space for Parents/Carers to gain support & guidance from Compass Birmingham.**



The drop-in will give you an opportunity to find out more about the support we can offer and have your questions answered.



## When?

Every Tuesday 11-12:30pm  
(8th October- 17th December 2024)

## Where?

Sessions will be online and you can access it by scanning the QR code.




**Please note:** Time will be allocated on a first come first serve basis. You will be asked to wait but please know that the practitioner will be aware and will let you in as soon as its your turn.





-  [birminghamhst@compass-uk.org](mailto:birminghamhst@compass-uk.org)
-  0121 227 8254
-  [www.compass-uk.org](http://www.compass-uk.org)
-  Instagram: @compassbmhst
-  Facebook: @compassbirminghamMHST

## Home Learning Links

Here are our core links for any home learning you would like to do.

|  |  |
|--|--|
|   | <p>Home learning grids</p> <p>These are for each half term for each year group and enable additional learning around the work the children do in class:</p> <p><a href="#">Home learning grids</a></p> |
|   | <p>BBC Bitesize</p> <p><a href="http://www.bbc.co.uk/bitesize/primary/">http://www.bbc.co.uk/bitesize/primary/</a></p>   |
|  | <p>Oak National Academy</p> <p><a href="#">Oak National Academy</a></p>  |

We also have some of our subscription services such as ....

|   |  |
|---|--|
|  | <p>Doodle</p> <p>A great platform to learn and practise key skills for maths and English</p> <p><a href="https://www.doodlemaths.com/">https://www.doodlemaths.com/</a></p>  |
|  | <p>Times Tables Rockstars</p> <p>Practice your times tables and quick maths recall skills</p> <p><a href="https://play.ttrockstars.com/auth/school/student">https://play.ttrockstars.com/auth/school/student</a></p> |

## Core useful links for parents

### **Year group expectation sheets:**

[Key expectation sheets](#)

### **Email address for parents:**

[parents@colebourne.bham.sch.uk](mailto:parents@colebourne.bham.sch.uk)

### **Term Dates:**

<https://www.colebourne.bham.sch.uk/diary-and-term-dates/>

### **Easy fundraising:** Raise money for Colebourne while you shop:

<https://www.easyfundraising.org.uk/causes/colebourneprimary>

### **Free school meals checker:**

<https://www.cloudforedu.org.uk/oefe/birmingham/provider>

### **School information for parents:**

<https://www.colebourne.bham.sch.uk/parents/>

### **School policies:**

[School policies](#)

## Useful Links for Parents



**Better Health**  
**Start for Life**

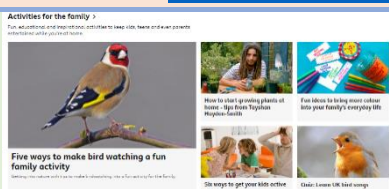
The place for trusted NHS advice and guidance to help you have a healthy and happy baby during pregnancy, birth and parenthood.

<https://www.nhs.uk/start-for-life/early-learning-development/>



BBC Wellbeing site – video and help for parents own mental health and that of their children

<https://www.bbc.co.uk/bitesize/groups/cw9v6l8d0q6t>



BBC bitesize parents  
Tips, advice and activity ideas for being a parent

<https://www.bbc.co.uk/bitesize/parents>



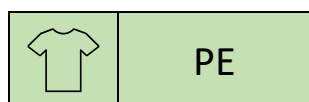
Birmingham School Health Support Service  
Lots of health related links and support for children and families including the school nurse  
Community paediatric and child development centres  
Forward thinking Birmingham  
And much more

[Birmingham School Health Support Service](#) | [Home education](#) | [Birmingham City Council](#)

PE KIT Days

***Autumn 2nd Half Term (Updated 11/11/24)***

**Children should come to school in PE kits  
on these days**



|    | Monday | Tuesday | Wednesday | Thursday | Friday |
|----|--------|---------|-----------|----------|--------|
| RN |        |         |           |          |        |
| RT |        |         |           |          |        |
| 1G |        |         |           |          |        |
| 1H |        |         |           |          |        |
| 2F |        |         |           |          |        |
| 2M |        |         |           |          |        |
| 3B |        |         |           |          |        |
| 3C |        |         |           |          |        |
| 4K |        |         |           |          |        |
| 4M |        |         |           |          |        |
| 5G |        |         |           |          |        |
| 5P |        |         |           |          |        |
| 6A |        |         |           |          |        |
| 6T |        |         |           |          |        |